

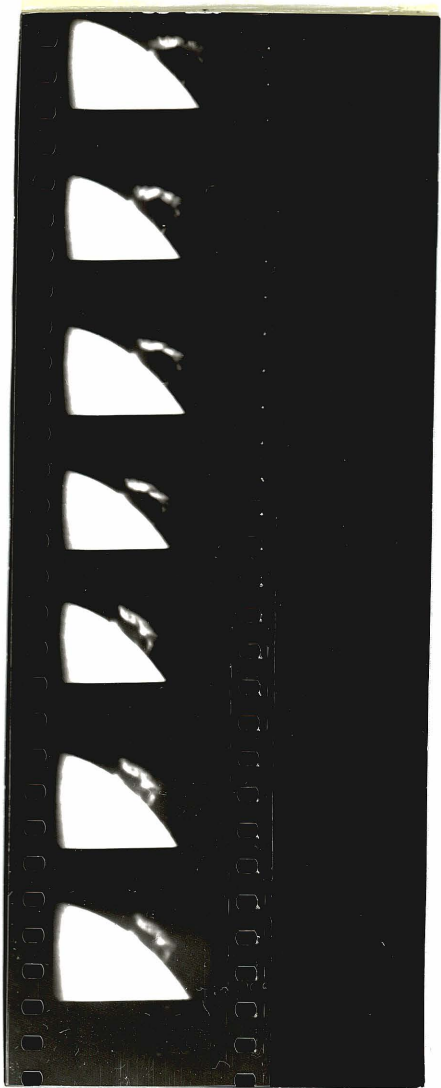
Dr. Hansen;

As you may see, the  
4-E-emulsion does all right,  
and the 103-E, not too bad.

Have brought the apparatus  
into a better focus -

These shots would be much  
better, if "heat-smearing" were  
not had - 95° temps here  
not conducive to best shots.  
Temper, as well as results.

Sincerely  
Ben



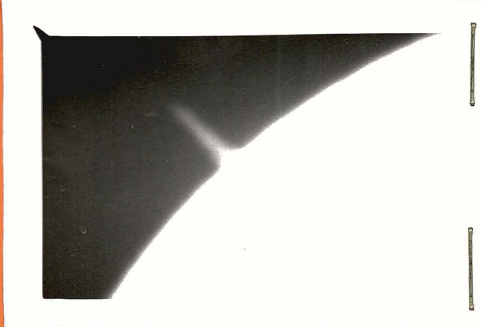
22 July, 1958

1939 ut.

S.  $42^\circ$  - W  $90^\circ$  (reversed)

103-E - film

a slow-growth "Prom"  
over 19th - 20th - 21st  
& 22nd through 23rd -



28 July, 1958.

1952 - (2012 max.) ut.

S.  $15^\circ$  - W.  $35^\circ$  -  $55^\circ$

along the long, large, spot-group  
 $20^\circ \times 10^\circ$  area - Intensity 75%  
4-E - emulsion  
flares at max. phase

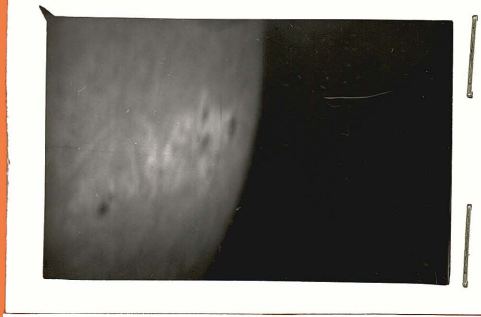


30 July, 1958.

2018 ut.

S.  $15^\circ$  - W  $50^\circ$  -  $80^\circ$

$30^\circ \times 10^\circ$  area  
Intensity 25%  
long, large, spot-group nearer limb  
4-E - emulsion  
flares at lower ebb.



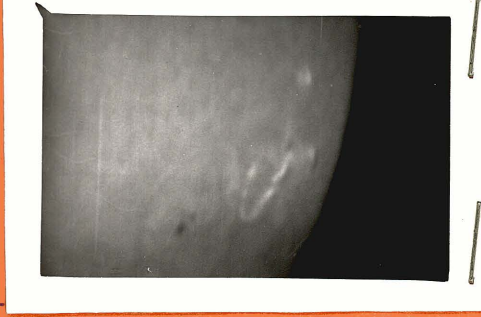
30 July, 1958

2148 ut (at max. intensity)

over  $10^\circ \times 10^\circ$  area

S.  $15^\circ$  - W.  $50^\circ$  -  $80^\circ$

Intensity of 100% along  
"Solar mountain" flares.  
Secondary spot-flare broke  
out farther north also  
103-E - emulsion.



Northwestern Obs. Spokane Wash. —  
Ha-Spectroheliograph —  
observer - Parmenter

# IMPORTANT

**Please—**

*look at your  
telephone listings:*

If you find any listings or advertisements have been omitted or are incorrect, please fill out the card below and mail it immediately.  
No postage is required.

We take many precautions to detect possible errors before your directory is printed. However, if any errors have occurred in spite of all we have done to give you an accurate directory, we would still like to know about them.

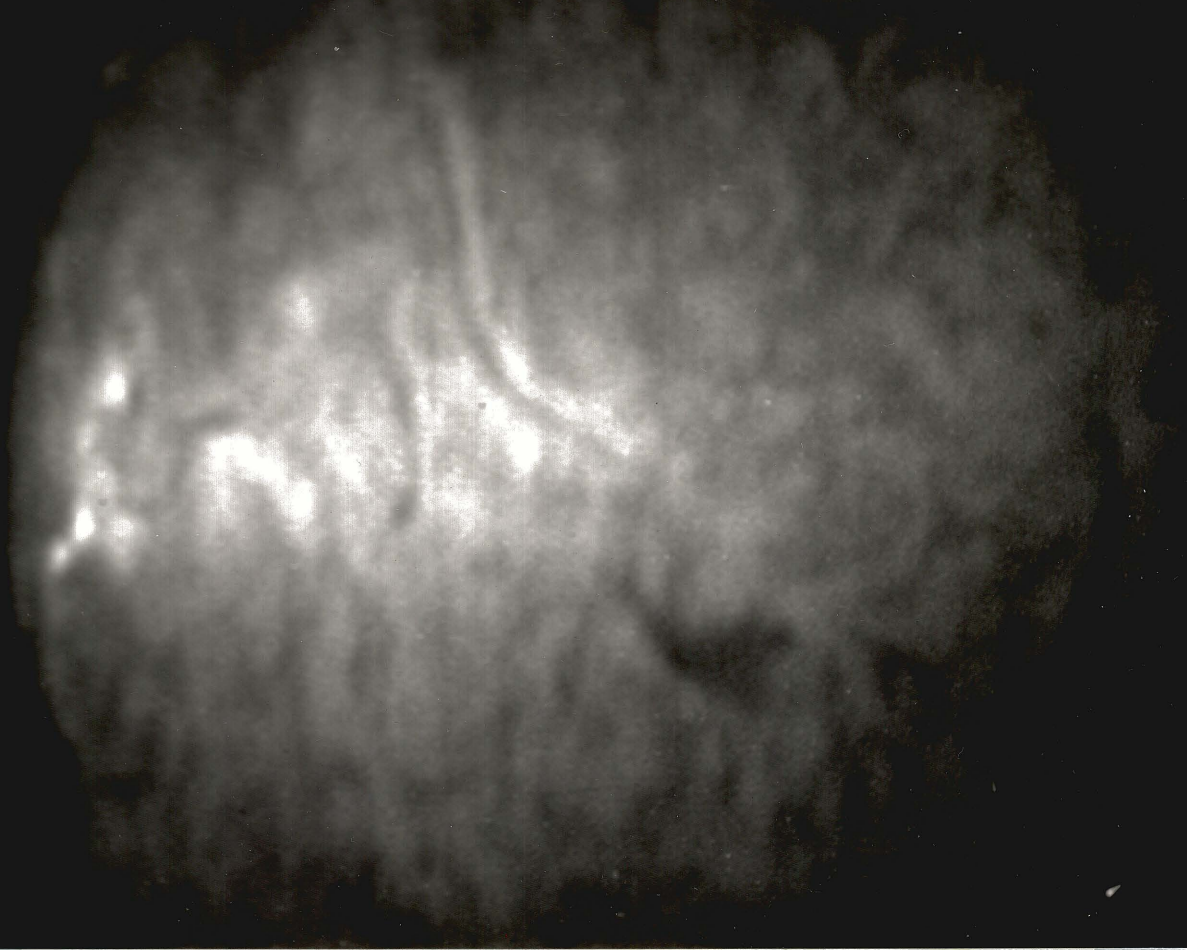
New and changed listings which were received after June 13, 1958, are not included in this directory.

Thank you for your cooperation.  
It will help us to serve you better.

**THE PACIFIC TELEPHONE and TELEGRAPH CO.**

**DETACH HERE**





Dr. Hansen:

Good Example of what the H-E  
will do when conditions right.

Ben