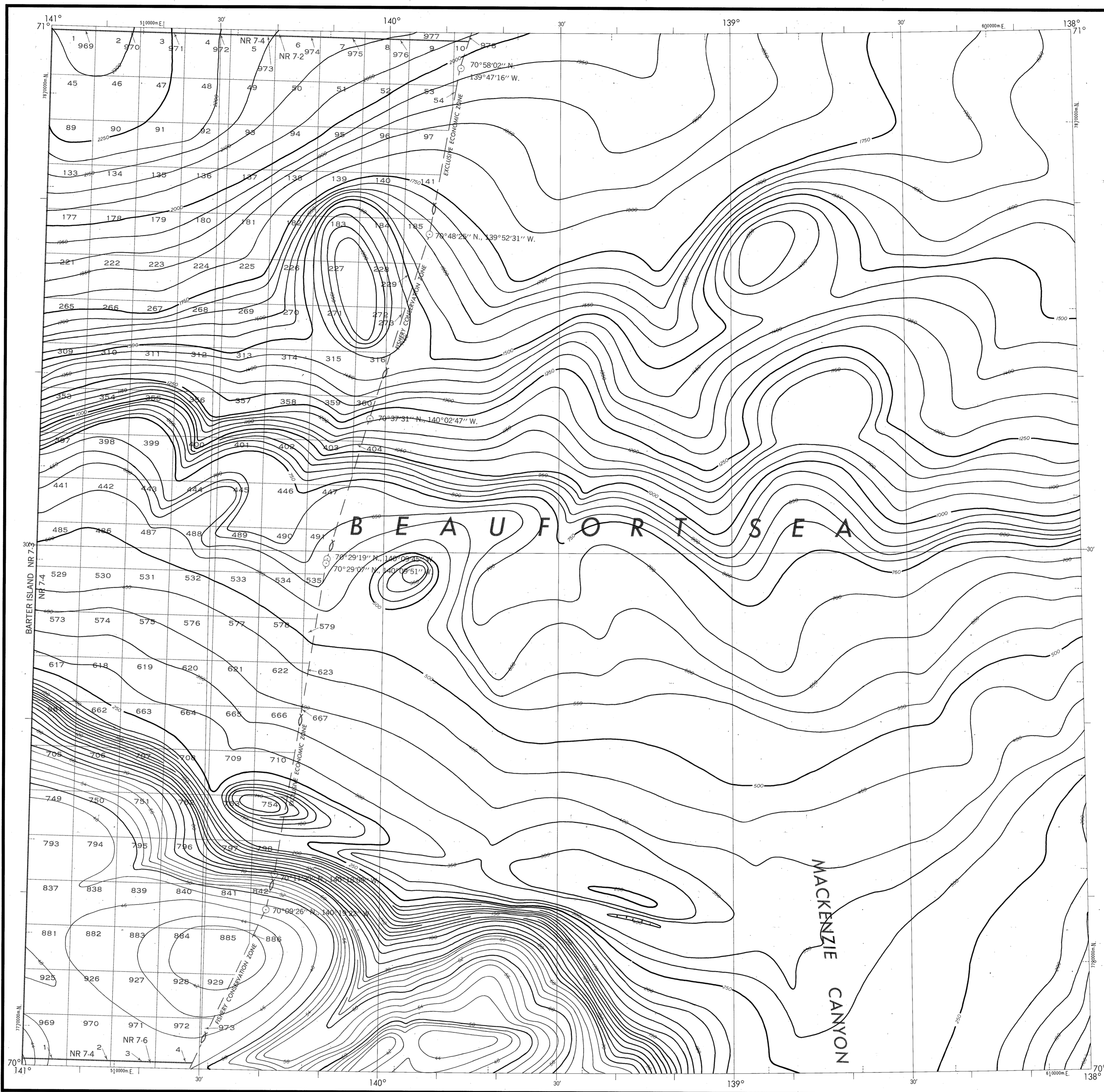


BATHYMETRIC MAP

BEAUFORT SEA  
MACKENZIE CANYON NORTH



Bathymetry compiled by the National Ocean Service (NOS) from Bathymetric Data other than NOS hydrographic surveys. This is a facsimile reproduction of the bathymetric manuscript and does not necessarily represent the final published form. This information is not intended for navigational purposes.

Bathymetric Contour Intervals: 10 meters to 200 meter depth, supplemented by 2 meter intervals; thence 50 meters to maximum depth.

Datum: Mean Lower Low Water (MLLW).

Universal Transverse Mercator Grid, Zone 7; 10,000 meter ticks (---) are shown inside the neoline.

Protraction Diagram data shown in a subuded (screened) black was compiled by the Minerals Management Service (MMS).

THIS MAP IS NOT A LEGAL DOCUMENT for Federal leasing purposes; for such purposes use the MMS Outer Continental Shelf Official Protraction Diagrams.

Heavy Line(s) indicate limits of these protraction diagrams.

EVALUATION OF BATHYMETRIC DATA

Bathymetry compiled by the National Ocean Service from Canadian Chart 7601, Random Tracks, and Bathymetric Surveys dated 1944 to 1979. The Bathymetric Data ranges in scale from 1:150,000 to 1:1,000,000 with a minimum line spacing of 3.0 and a maximum line spacing of 15.0 nautical miles. Data corrected for sound velocity according to Echo Sounding Correction Tables, 1960.

CANADIAN CHART 7601 1979 1:150,000

OUTER CONTINENTAL SHELF RESOURCE MANAGEMENT MAP

UNITED STATES DEPARTMENT OF COMMERCE  
NATIONAL OCEANIC AND ATMOSPHERIC ADMINISTRATION  
NATIONAL OCEAN SERVICE

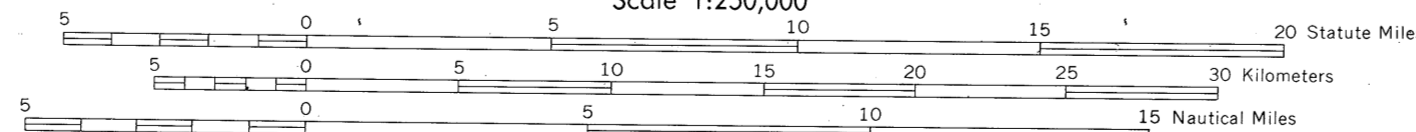
1986

Produced at Washington, D.C.  
for

UNITED STATES DEPARTMENT OF THE INTERIOR  
MINERALS MANAGEMENT SERVICE

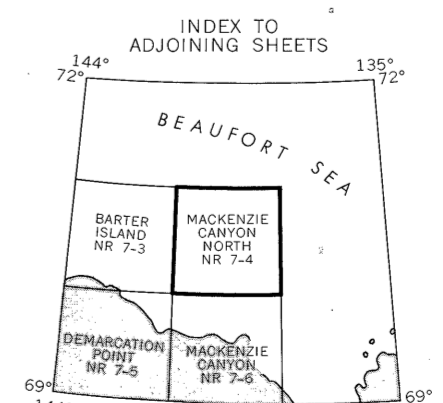
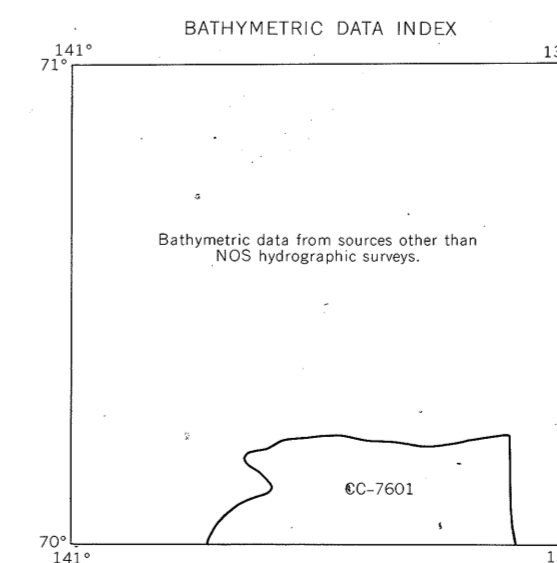
TRANSVERSE MERCATOR PROJECTION

Scale 1:250,000



MACKENZIE CANYON NORTH

NOS NR 7-4 (OCS)



DRAWING NUMBER  
NR 7-4

DRAWING NUMBER  
1:250,000

DRAWING NUMBER  
6C-7601

DRAWING NUMBER  
6C-7601