

US and British Royal Navy nuclear submarine cruises (1958 - 1988).



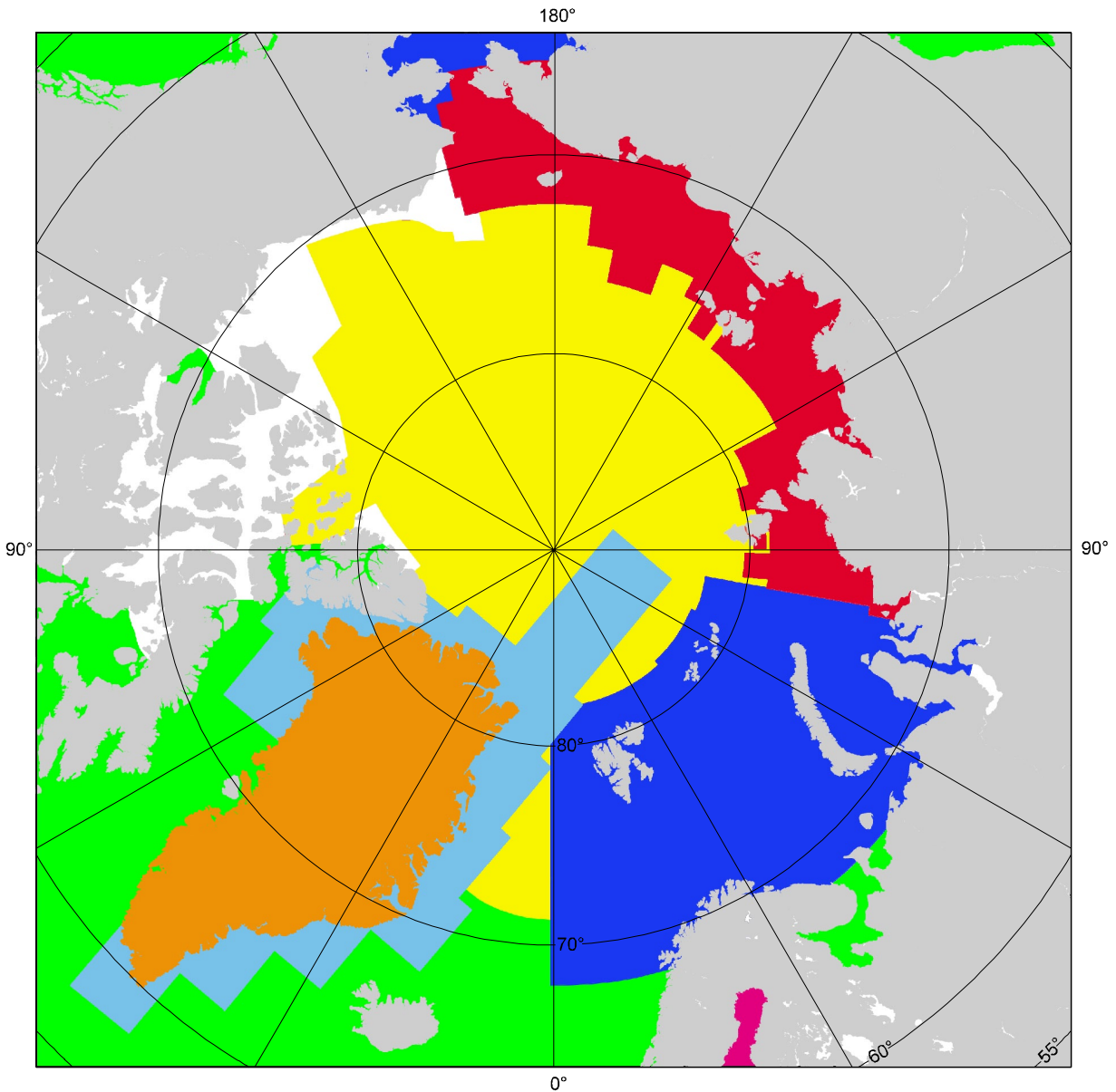
Soundings collected by nuclear submarines during the SCICEX program (1993-1999).



Soundings collected by surface vessels primarily obtained from four archives:

- (1) the US National Geophysical Data Center (NGDC)
- (2) the US Naval Research Laboratory (NRL)
- (3) the Canadian Hydrographic Service (CHS)
- (4) the Royal Danish Administration of Navigation and Hydrography (RDANH)

Recent acquisitions provided by agencies that mobilized missions aboard the Swedish icebreaker Oden (1991, 1996) and the German research vessel Polarstern (1990, 1994, 1995, 1997) are also marked in blue.



Contours drawn during this present work in order to facilitate the computer gridding.



Navigational charts published by the Russian Federation's Head Department of Navigation and Oceanography (HDNO).



Newly-published Russian map (Head Dep. of Navigation and Oceanography et al., 1999).



Bathymetry in the Gulf of Bothnia was derived from a digital grid compiled by Seifert and Kayser (1995).



Charts published by the US Naval Research Laboratory (Perry et al., 1985; Cherkis et al., 1991; Matishov et al., 1995).



Contours retrieved from GEBCO Digital Atlas.



Greenland DTM developed by KMS, the Danish Cadaster and Mapping Agency (Ekholm, 1996).



GTOPO30 topographic model (U.S. Geological Survey, 1997).