

THE JOVIAN CHARGING ENVIRONMENT AND ITS EFFECTS—A REVIEW*

H. B. Garrett¹, I. Katz¹, I. Jun¹, W. Kim¹, A. C. Whittlesey¹, and R. W. Evans²

¹The Jet Propulsion Laboratory (122-107)

The California Institute of Technology

4800 Oak Grove Dr.

Pasadena, CA 91109 USA

²Mori Associates

2550 Honolulu Ave., #201

Montrose, CA 91020 USA

**Copyright 2010. All rights reserved.*



AGENDA

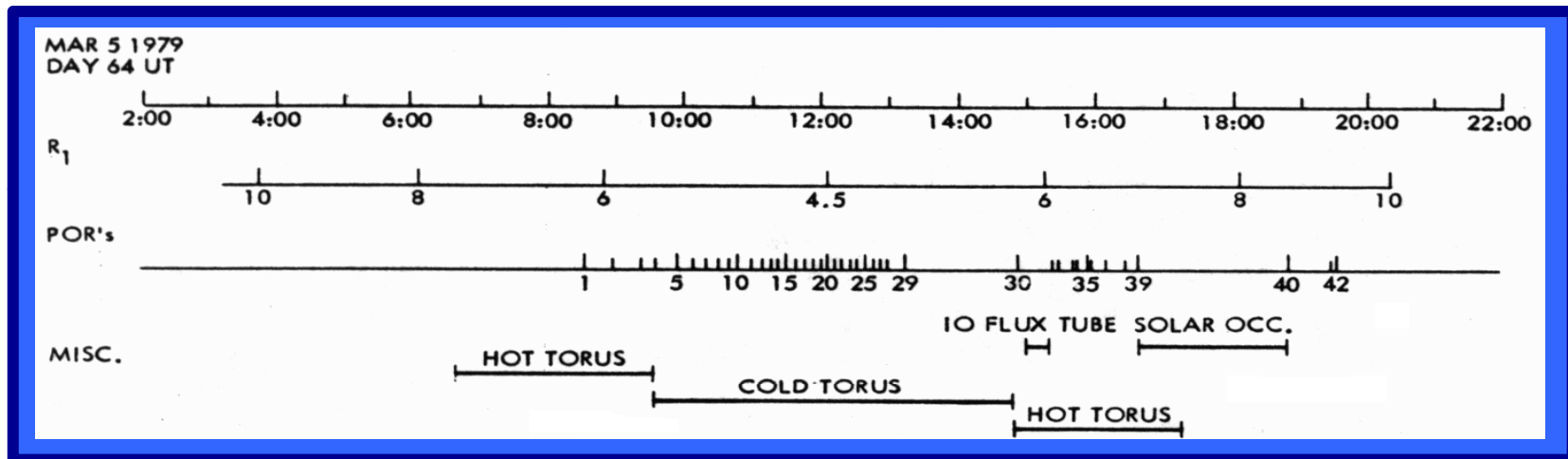
- **Overview-What's the Issue?**
- **Ambient Environment at Jupiter**
 - Jovian Plasma
 - Jovian Auroral Zone
 - Jovian Diffuse Aurora
- **Charging Effects at Jupiter**
 - Surface Potentials
 - IESD at Jupiter
 - $V \times B$ at Jupiter
- **Conclusion**



OVERVIEW

WHAT ARE THE ISSUES?

- Voyager 1 experienced 42 anomalies during closest approach to Jupiter—believed to be due to charging



- Jupiter has an extremely severe environment:
 - Pronounced auroras easily visible from Earth!
 - A complex magnetic field 2×10^4 that of Earth's!
 - The highest intensity electron radiation belts in the Solar System!
- IF we understand the jovian environment, THEN proper mitigation techniques should allow us to limit its effects.



Planetary Characteristics

Earth

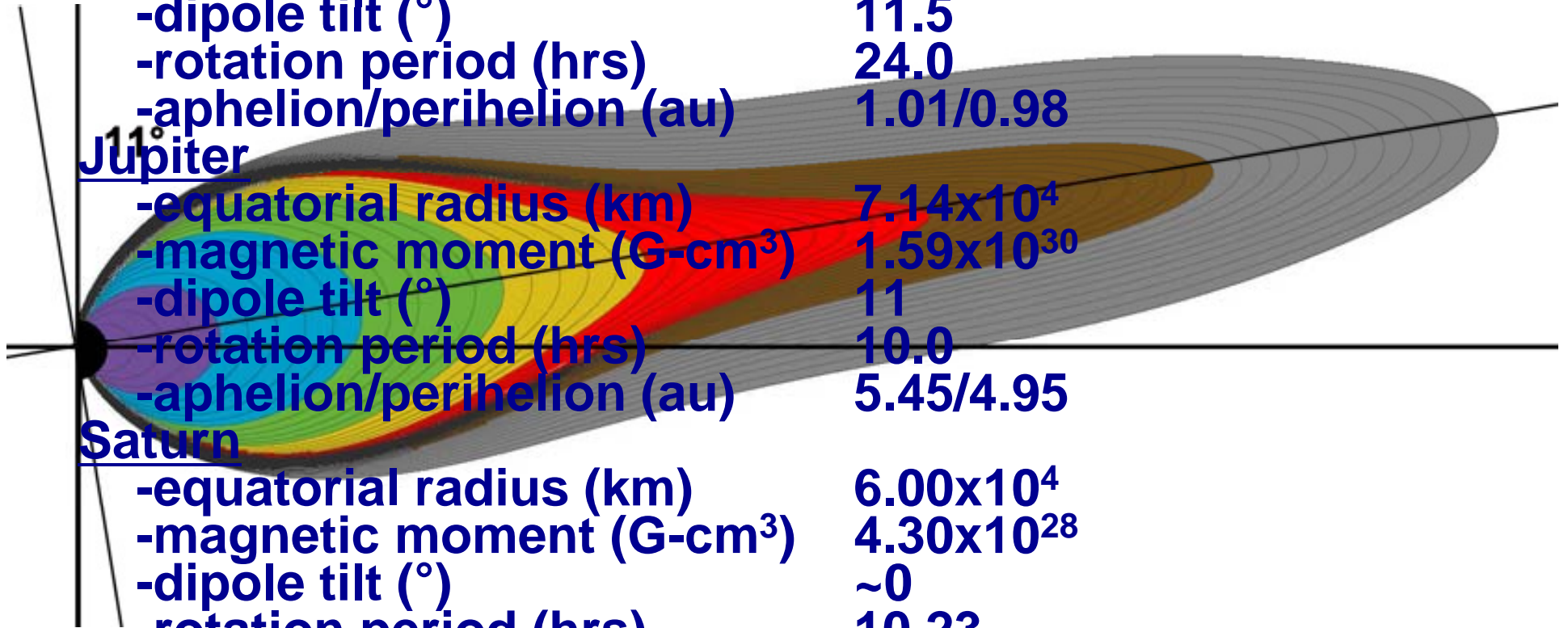
-equatorial radius (km)	6.38×10^3
-magnetic moment ($G \cdot cm^3$)	8.10×10^{25}
-dipole tilt ($^\circ$)	11.5
-rotation period (hrs)	24.0
-aphelion/perihelion (au)	1.01/0.98

Jupiter

-equatorial radius (km)	7.14×10^4
-magnetic moment ($G \cdot cm^3$)	1.59×10^{30}
-dipole tilt ($^\circ$)	11
-rotation period (hrs)	10.0
-aphelion/perihelion (au)	5.45/4.95

Saturn

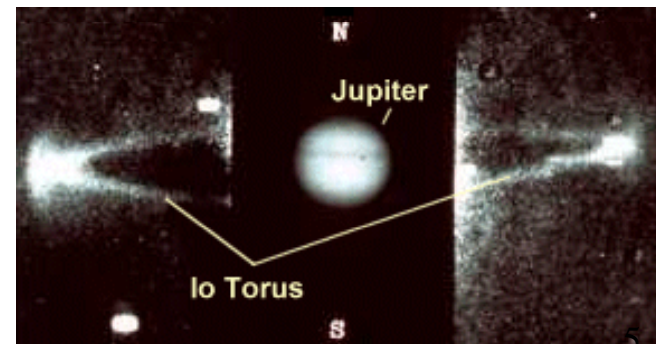
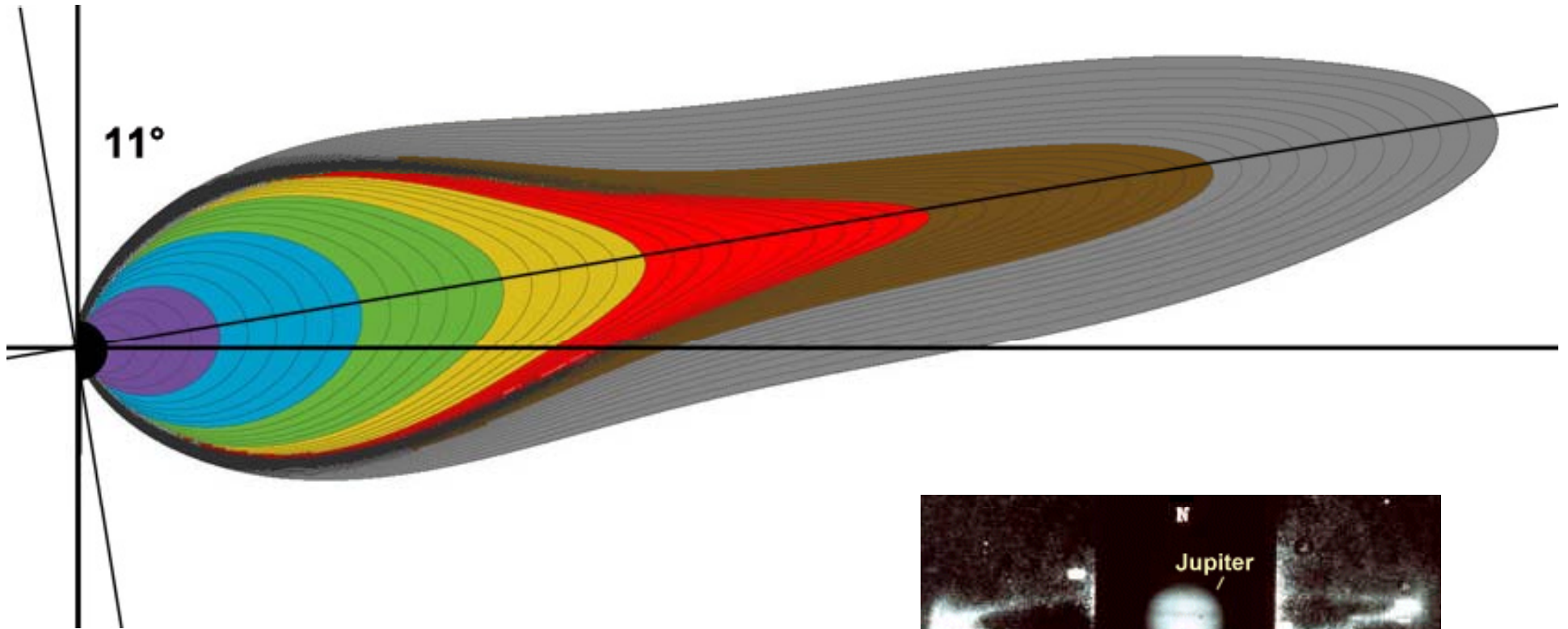
-equatorial radius (km)	6.00×10^4
-magnetic moment ($G \cdot cm^3$)	4.30×10^{28}
-dipole tilt ($^\circ$)	~ 0
-rotation period (hrs)	10.23
-aphelion/perihelion (au)	10.06/9.01





National Aeronautics and Space
Administration
Jet Propulsion Laboratory
California Institute of Technology

Planetary Characteristics





Jovian Plasma Environment

The jovian plasma environment is defined
by two distribution functions:*

(A) Convected *Maxwell-Boltzmann*:

$$f_i(v) = \frac{N_i}{\pi^{3/2} v_0^3} \exp(-(\vec{v} - \vec{v}_c)^2 / v_0^2)$$

(B) *Kappa* Distribution:

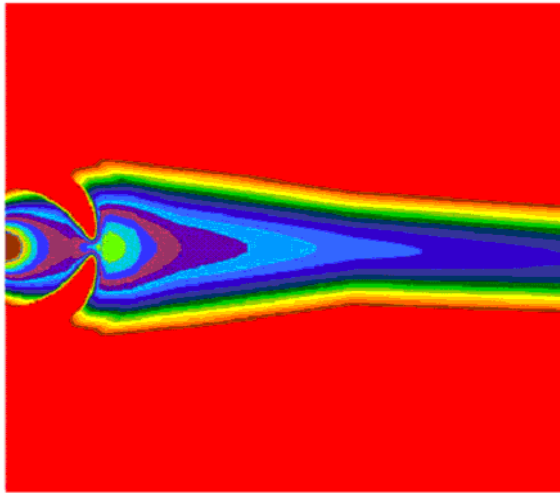
$$f_\kappa(E) = N_\kappa (m_\kappa / 2\pi E_0)^{3/2} \kappa^{-3/2} \frac{\Gamma(\kappa+1)}{\Gamma(\kappa-1/2)} \frac{1}{(1 + E/\kappa E_0)^{\kappa+1}}$$

*[Divine and Garrett, 1983]

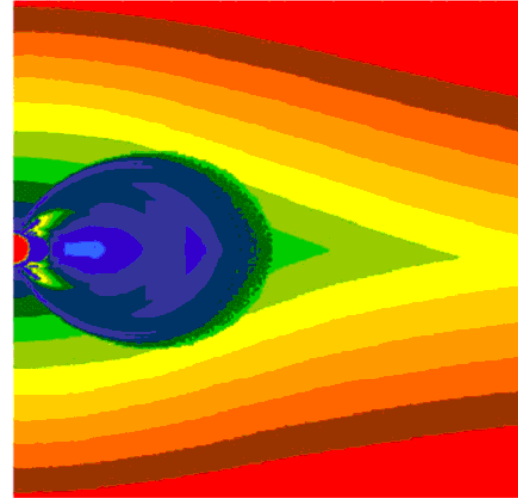


National Aeronautics and Space
Administration
Jet Propulsion Laboratory
California Institute of Technology

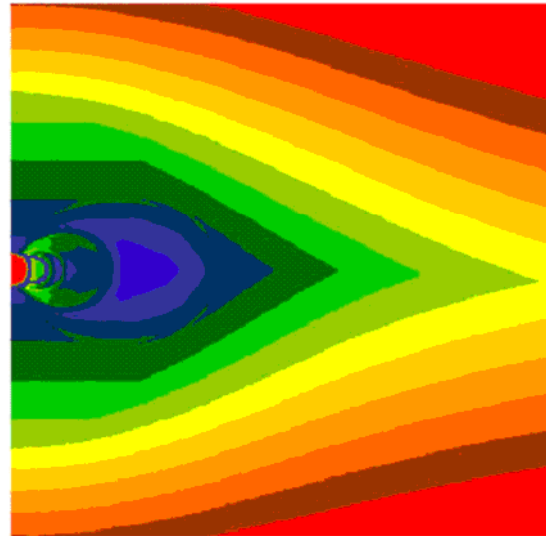
Jovian Plasma Environment



Cold Plasma Density



Hot Electron Density



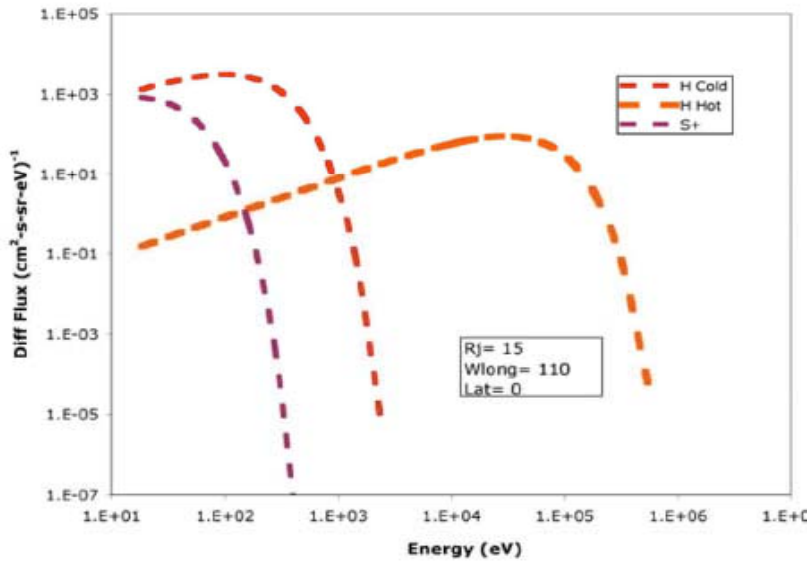
Hot Proton Density

**Based on [Divine and
Garrett, 1983]*



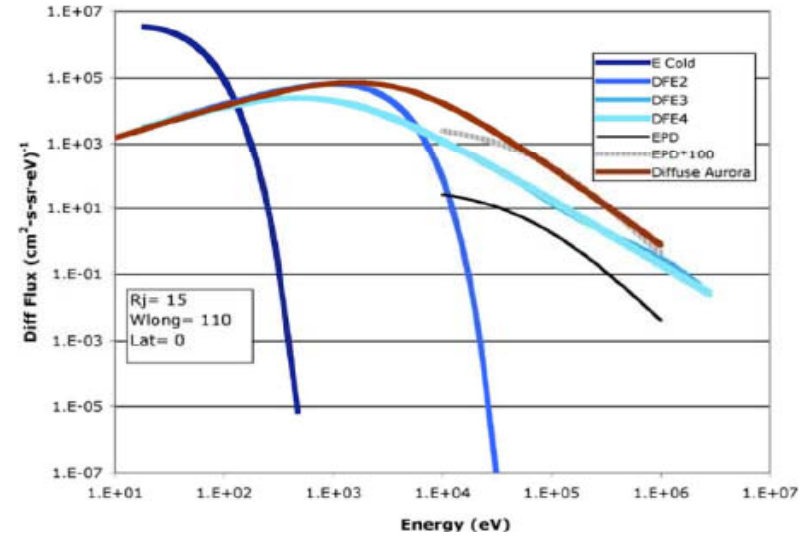
Jovian Plasma Environment

Jovian Differential Plasma Fluxes vs Energy



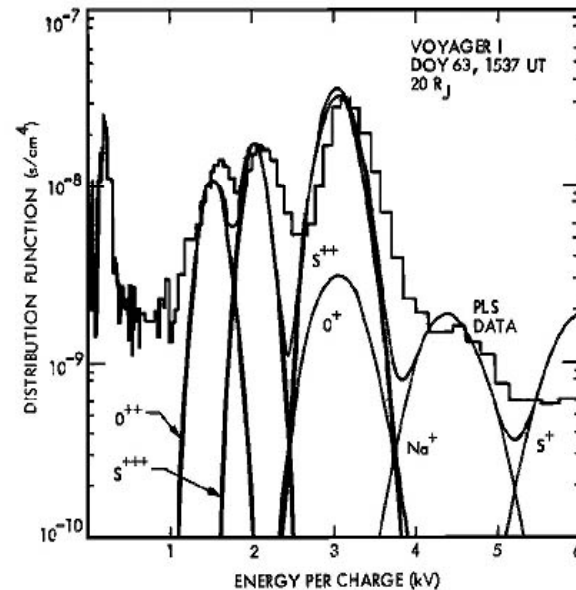
Proton Plasma
 110°W, 15 R_J, 0°λ

Jovian Differential Plasma Fluxes vs Energy



Electron Plasma*
 110°W, 15 R_J, 0°λ

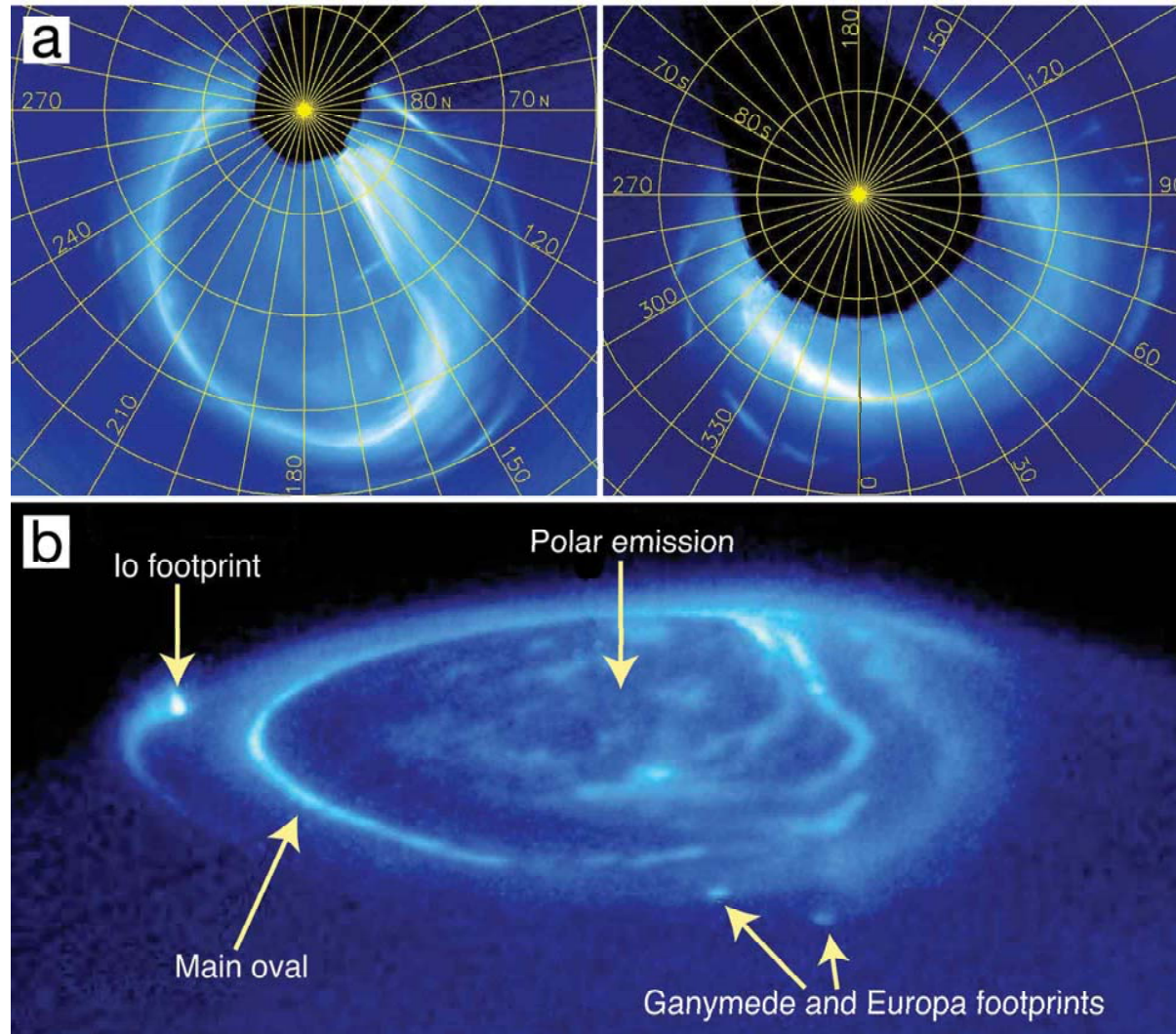
*Diffuse spectrum based on [Bhattacharya et al., 2001] and [Divine and Garrett, 1983] "Warm Electron" spectrum. See [Garrett et al., 2008] for details



Voyager 1 Data Compared to Model



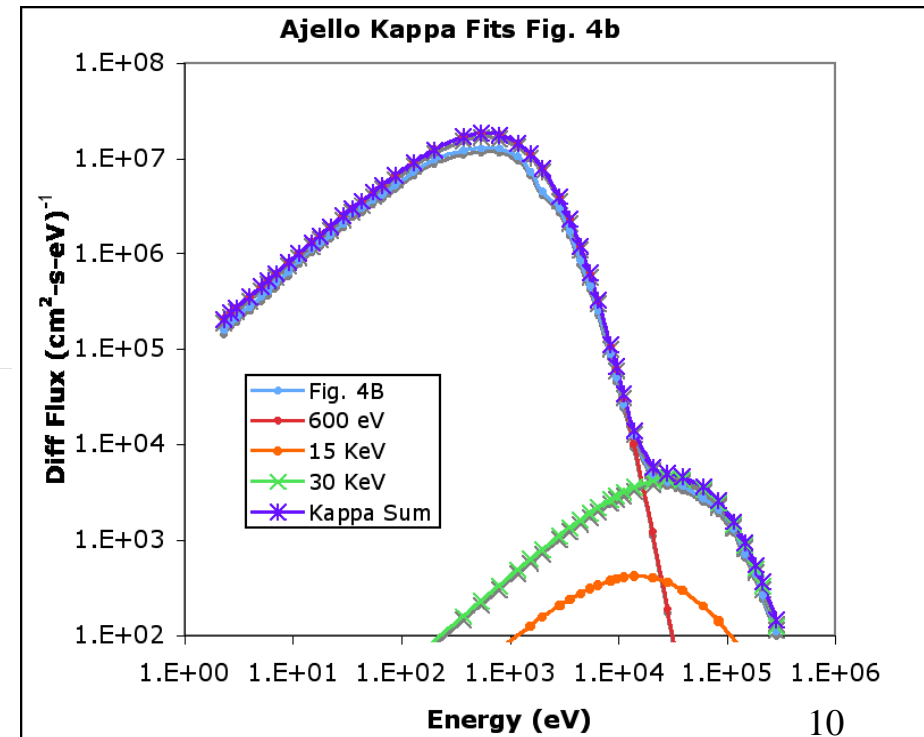
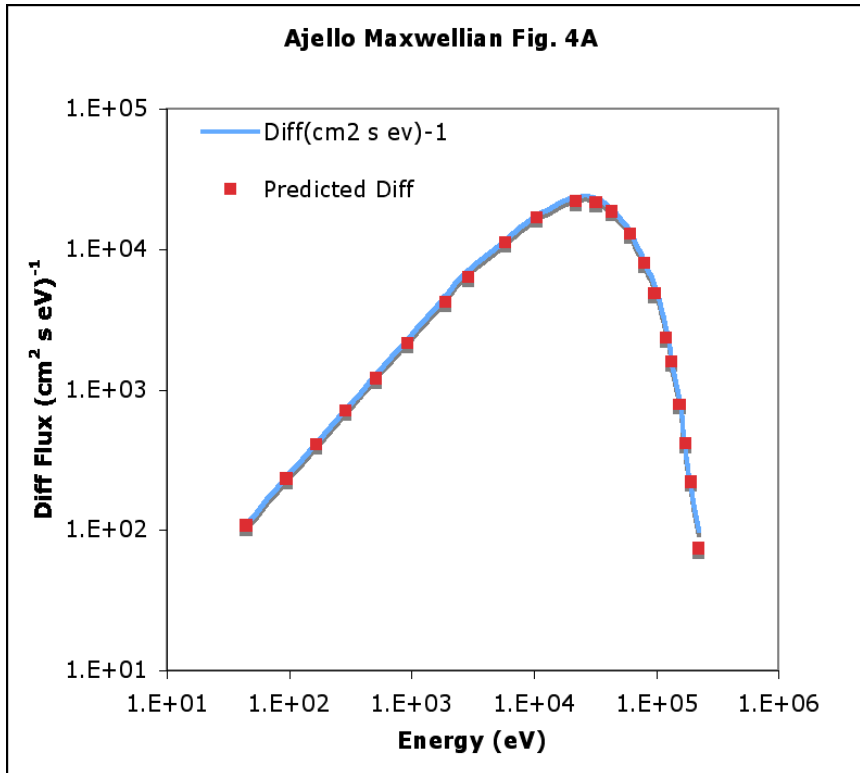
The Jovian Aurora



HST UV images of Jovian aurora. (a) Polar projections of main auroral ovals (left North Pole, right South Pole) (b) Image of northern aurora, showing: Main oval and polar emissions as well as footprints from three of the Galilean moons (c) Io field line.



Jovian Auroral Zone Spectra*



*Ajello et al., 2001



Jovian Surface Potentials

Assume current balance for Aluminum in shadow:

$$I_E(V) - [I_I(V) + I_{SE}(V) + I_{SI}(V) + I_{BSE}(V)] = I_T \sim 0$$

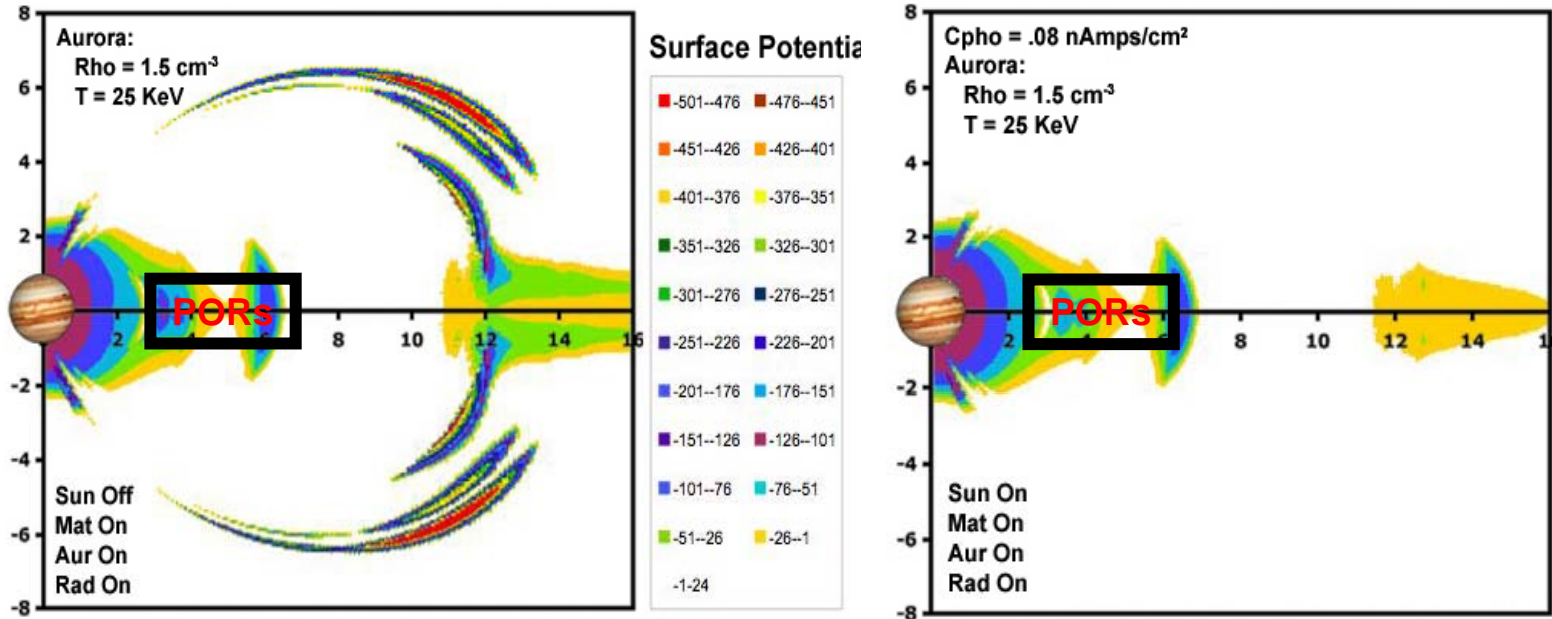
SURFACE CHARGING CONCERNS!!

RJ	ALAT	No Aurora	A Max	A K +I/1	A K +I/10	A K +I/100	Diffuse WC	Diffuse WC/10	Diffuse WC/100
1.2	70	-106	-114	-119	-308	-1025	-113	-107	-106
2	70	-293	-652	-732	1465	-1699	-396	-45	-37
15	0	-8	-2212	-1934	-3984	-4834	-1318	-24	-9

Estimates of surface potentials for: (1) Maxwellian or Kappa (“+I/1, +I/10, +I/100” => 100%, 10%, 1% of ion plasma); Diffuse aurora varied from 100 ergs/cm²-s to 1 erg/cm²-s



Auroral Charging



A. Dark Side

B. Sunlit Side

Meridional plots of the charging potentials in darkness and sunlit for nominal auroral and plasma environments.



Surface Charging

WE FIND:

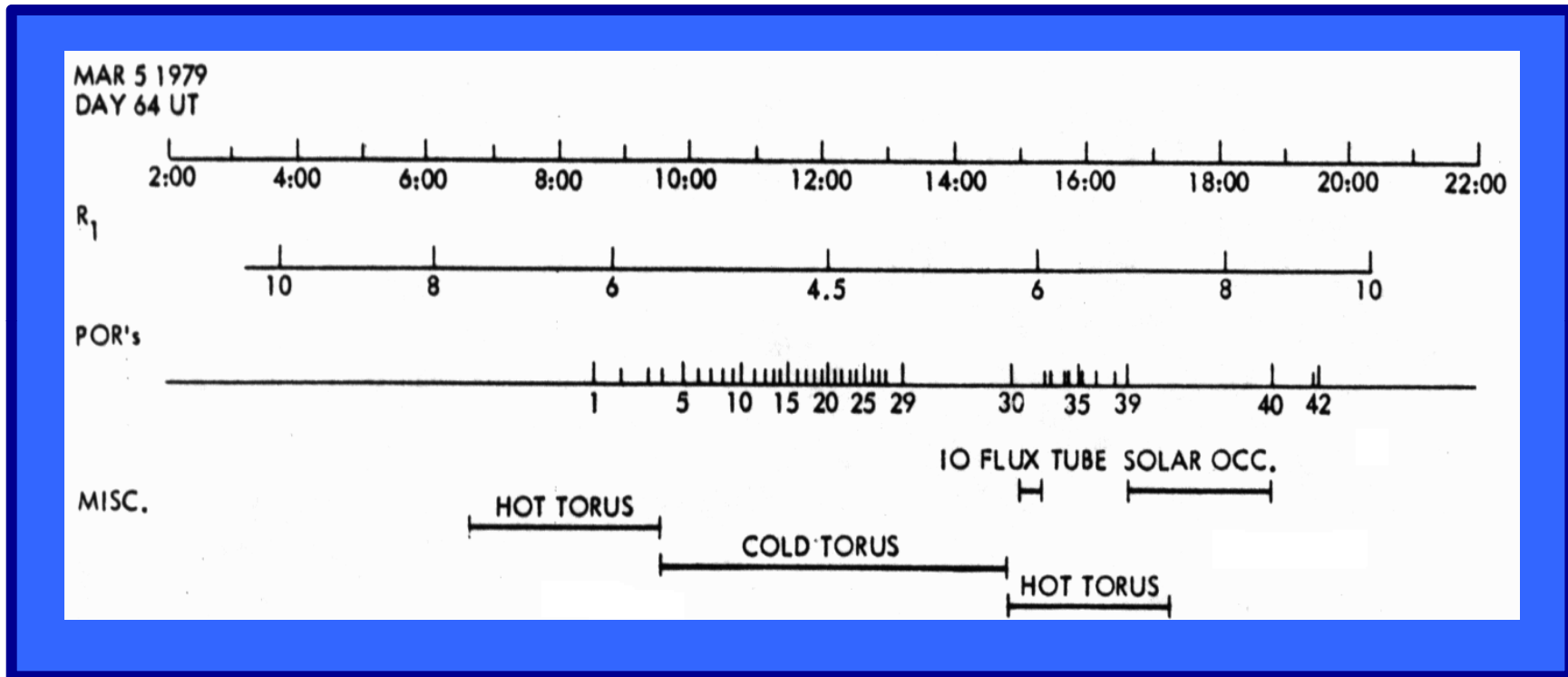
- Jovian auroral zone can cause ~300 V charging above background levels over poles--charging is moderated by cold plasmasphere.
- Lowering jovian cold plasma density (as observed for Earth aurora) increases charging to ~1-2 kV.
- For diffuse aurora, potentials are barely above the background levels (~100-400 V) over poles.
- At equatorial crossing of auroral field lines, “Worst Case” auroral fluxes may cause significant charging (-2-5 kV) in the 15-25 R_j equatorial region.

THIS IMPLIES:

- Surface charging is a potential problem for spacecraft crossing through the auroral zone though levels are within current mitigation techniques.
- Equatorward extension of aurora will be of concern to missions passing through the 15-25 R_j equatorial region--again, however, these levels are well within levels we protect geosynchronous spacecraft against.
- **Surface charging will be of concern at Jupiter if standard mitigation procedures are not followed!**



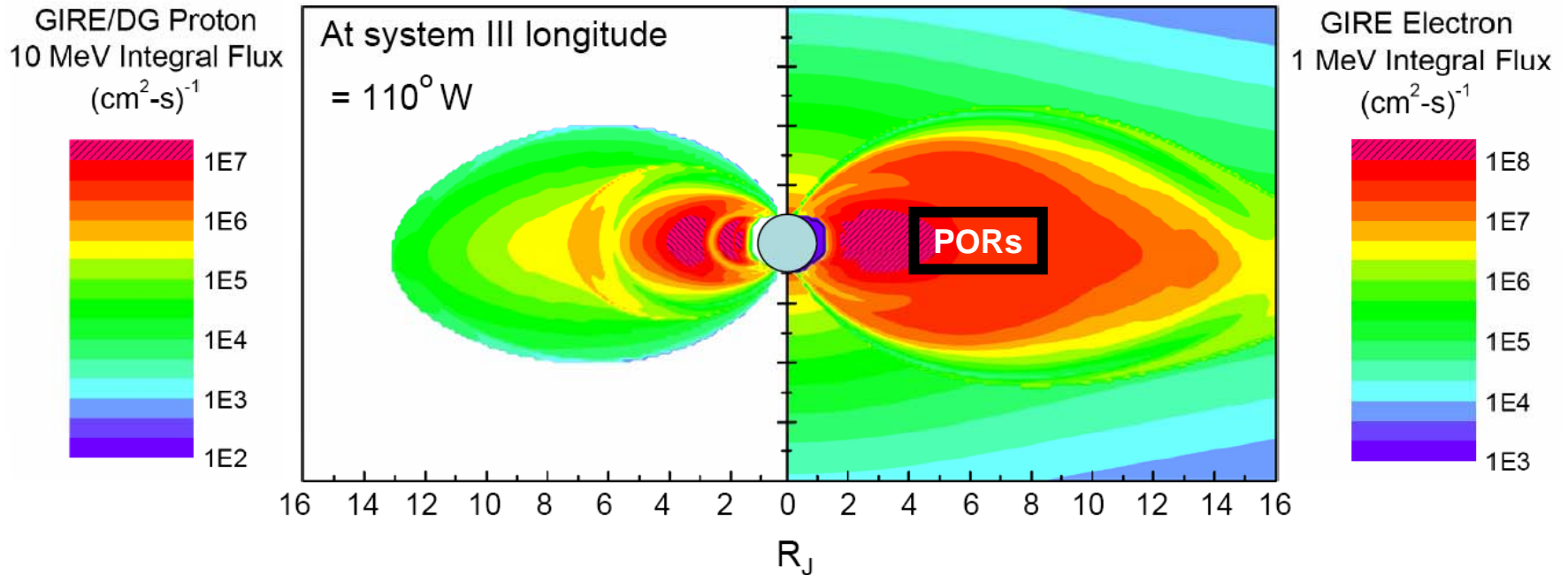
Voyager 1 PORs



Temporal and spatial occurrences of the 42 Voyager 1 POR anomalies during the March 5, 1979 flyby [Leung et al., 1986]



JOVIAN RADIATION MODELS

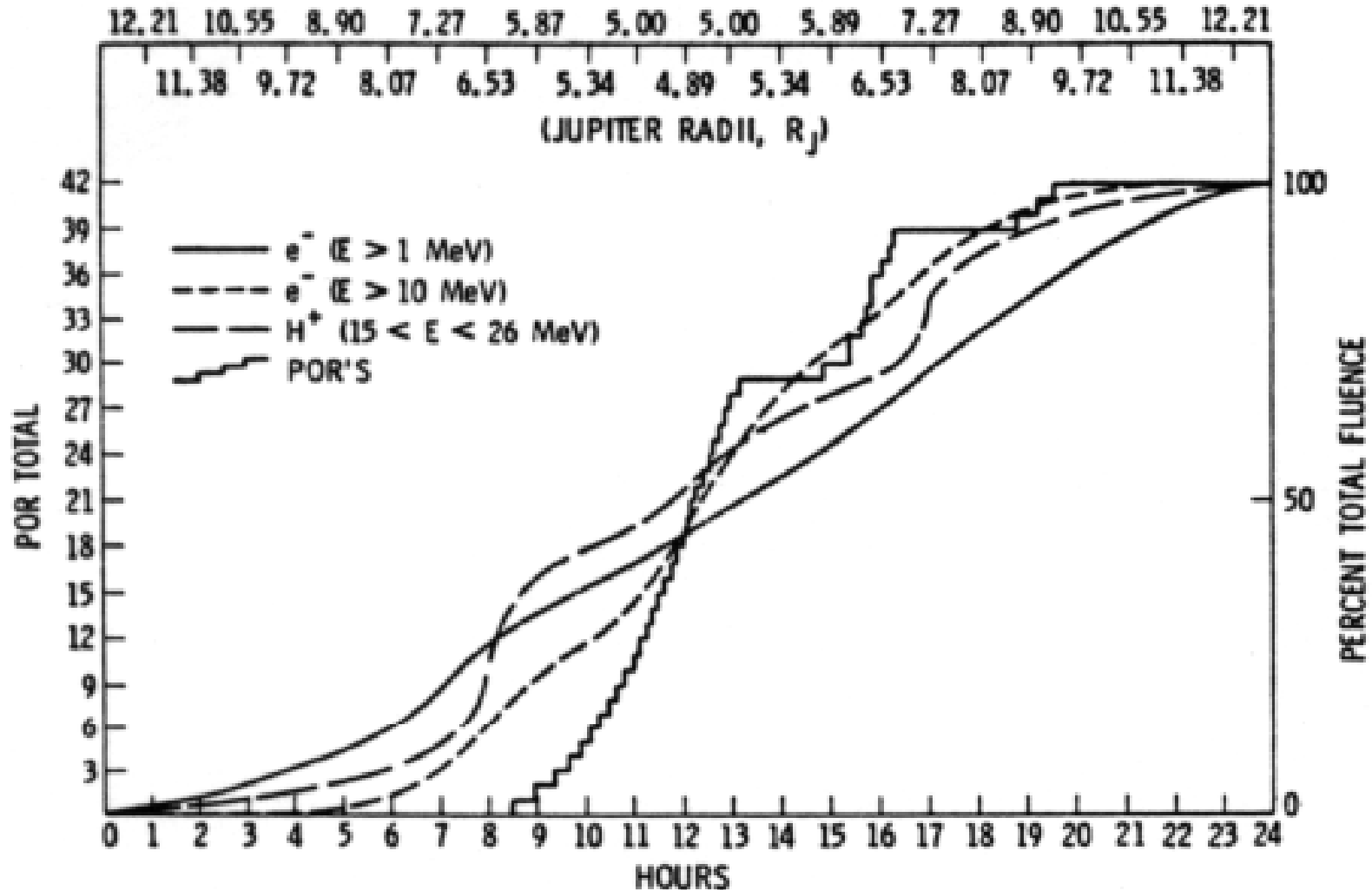


Contour plots of ≥ 1 MeV electron and ≥ 10 MeV proton integral fluxes at Jupiter. Coordinate system used is jovi-centric. Models are based on Divine/GIRE models*. Meridian is for System III 110° W.

*[Divine and Garrett, 1983], [Garrett et al., 2003]



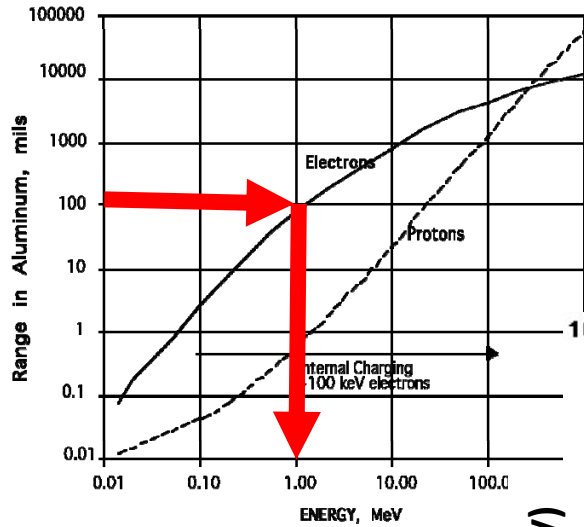
Voyager 1 PORs



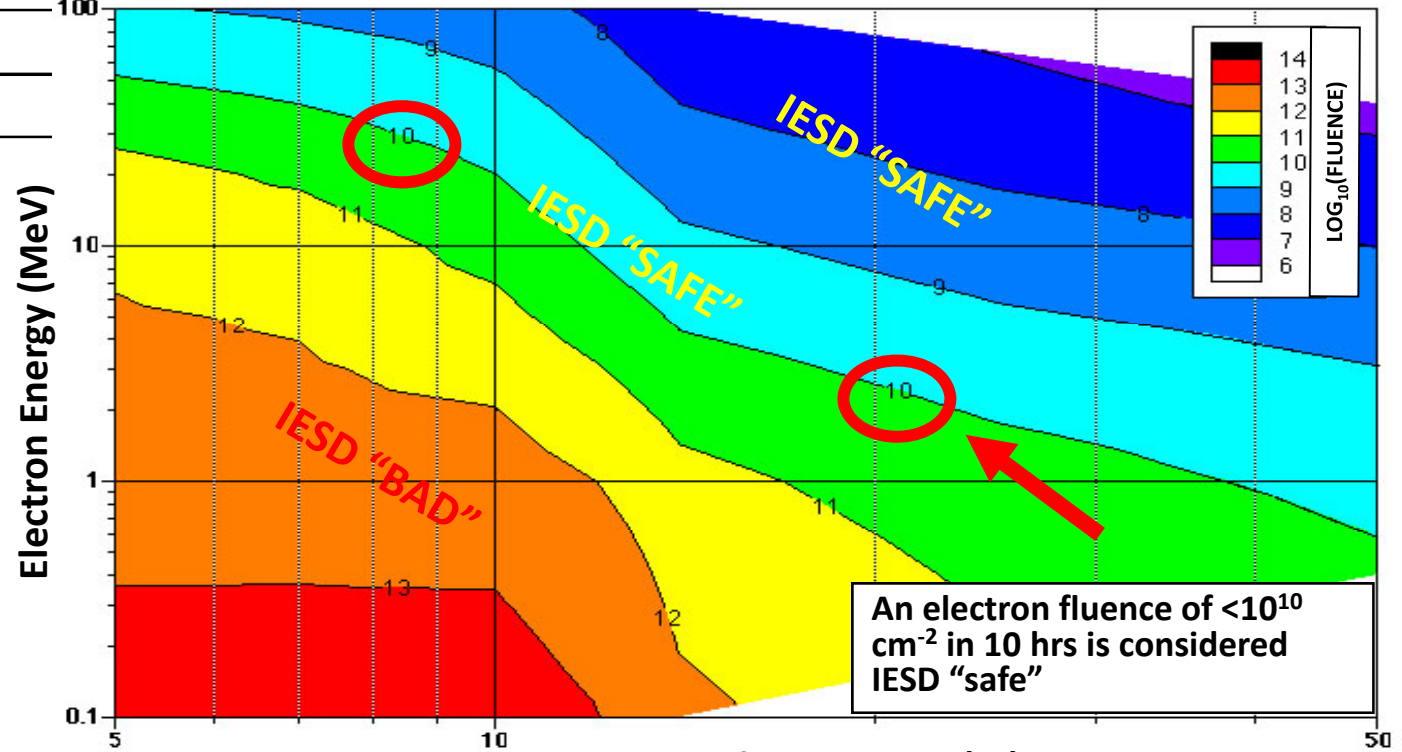
Cumulative occurrence frequency of 42 Voyager 1 POR anomalies vs cumulative high energy electron ($E > 1$ MeV and $E > 10$ MeV) and proton ($15 \text{ MeV} < E < 26 \text{ MeV}$) fluences [Leung et al., 1986].



Jovian IESD



e^- , H^+ ranges in Al
[Whittlesey, 1999].



Contour plot of Log electron fluence in (cm^{-2}) versus flyby perijove distance and energy [Evans and Garrett, 2002].



National Aeronautics and Space
Administration
Jet Propulsion Laboratory
California Institute of Technology

Jovian IESD

We find:

- The main radiation belt at Jupiter is dominated by 1-100 MeV electrons
- The time integrated flux of the high energy electrons (e.g, the fluence vs time) is consistent with the pattern of Voyager 1 PORs.

This implies:

- PORs were likely caused by IESD on Voyager 1
- The IESD threat is potentially very severe at Jupiter due to its intense, high energy electron belt
- A thorough IESD mitigation program is a critical component of any mission to regions inside ~16 R_J at Jupiter***



National Aeronautics and Space
Administration
Jet Propulsion Laboratory
California Institute of Technology

VxB Effects at Jupiter

Theory: An inductor moving across an electric field generates a potential difference across the inductor:

$$\phi = v \times B \cdot l$$

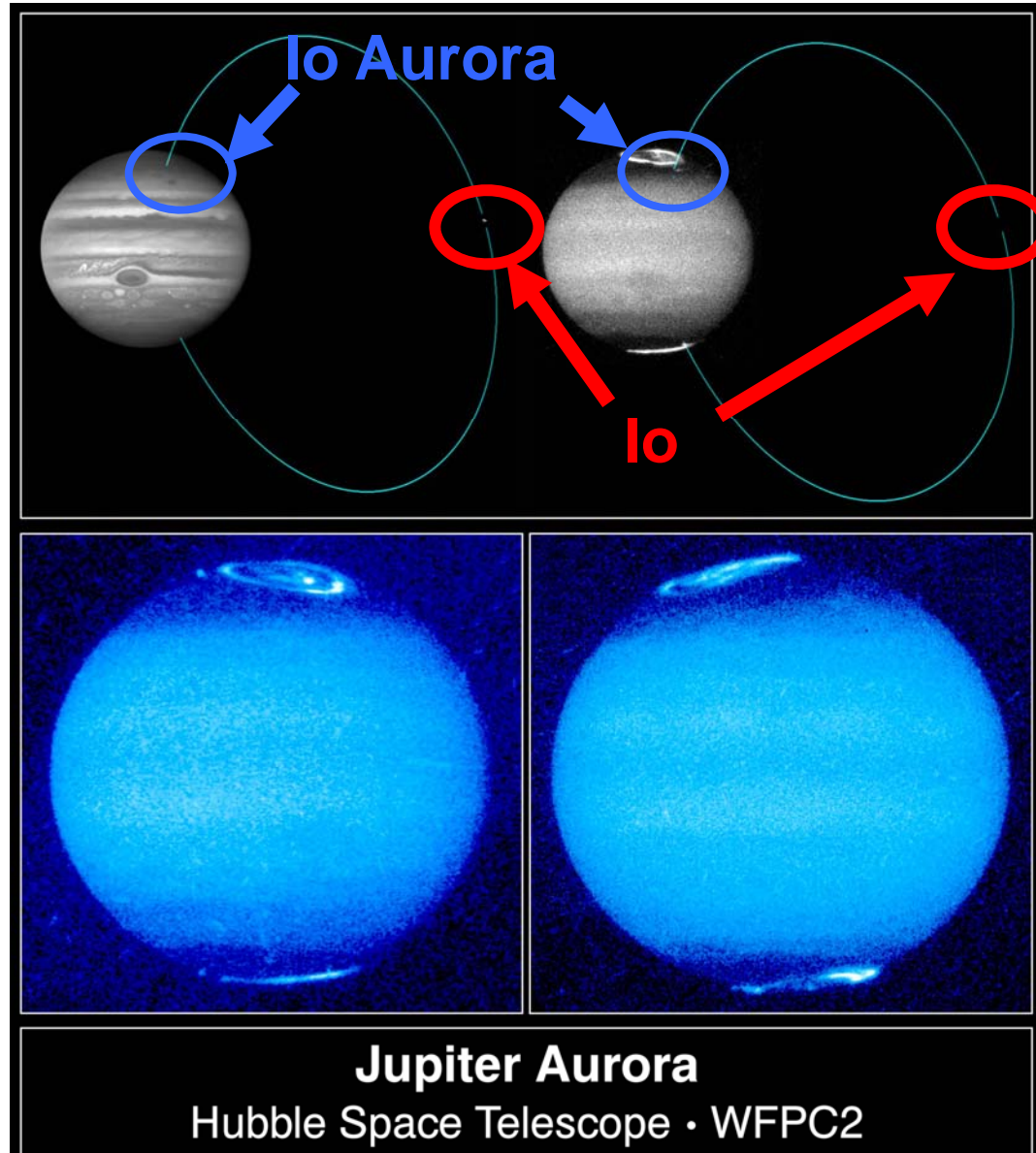
For Io:

$$B \sim 0.02 \text{ G}$$

$$v \sim 17.3 \text{ km/s}$$

$$l \sim 3640 \text{ km}$$

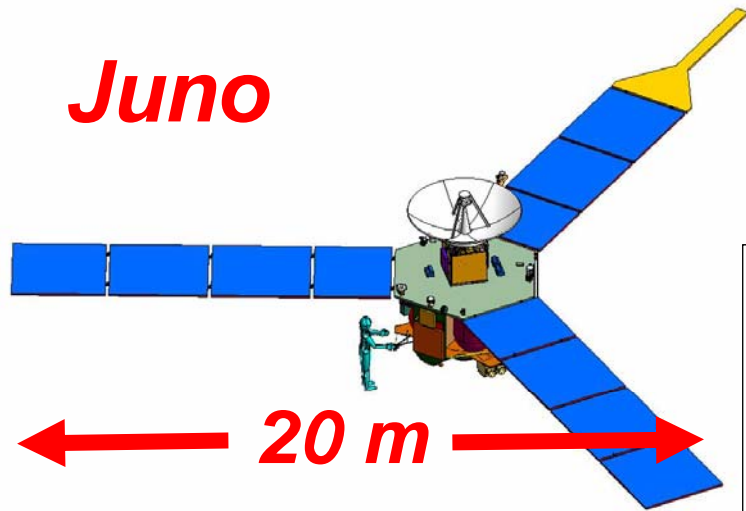
$$\phi \sim 125,000 \text{ V!!}$$





National Aeronautics and Space
Administration
Jet Propulsion Laboratory
California Institute of Technology

Juno VxB



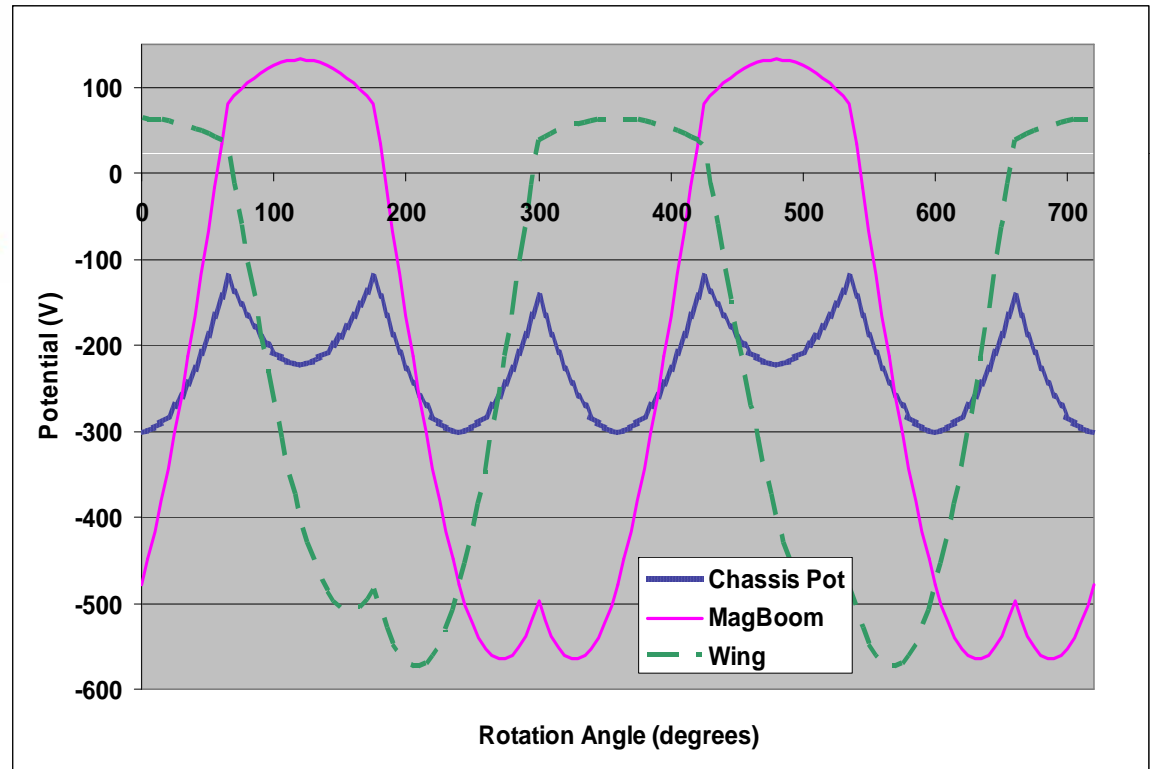
For Juno:

$B \sim 10 \text{ G}$

$v \sim 60 \text{ km/s}$

$l \sim 20 \text{ m}$

$\phi \sim 1200 \text{ V}$



Angular dependence of vxB
potentials for Juno surfaces



Jovian $V \times B$

We find:

- $v \times B$ induced electric fields at Jupiter are real and readily visible—Io has a field of over 125,000 V!
- A polar orbiter skimming the upper atmosphere of Jupiter like Juno could see fields of 60 V/m producing as much as a 1200 V drop across the spacecraft

This implies:

- $v \times B$ effects will be measurable on Juno and will potentially affect low energy plasma and electric field measurements (magnetic field measurements will not be affected)
- **Care must be taken in grounding the solar arrays though the likelihood of arcing is limited**



Conclusion

We Found:

- Charging effects in Jupiter's environment first became of interest as a result of 42 POR events during the Voyager 1 flyby.
- Surface potentials of ~1-5 kV might indeed be possible due to jovian auroras but the PORs did not appear to be connected to surface charging.
- The jovian electron radiation environment using the Divine radiation models implied that Voyager PORs were most likely the result of IESD which could be a real problem at Jupiter.
- Visual observations of auroral spots associated with the jovian moons from the Earth prove that $v \times B$ -induced electric fields are real.
- Estimates of the $v \times B$ fields showed that for the Juno mission the field will reach 60 V/m giving potentials of ~1 kV across the 20 m structure.
- Finally, none of these effects has proven to be so severe that standard charging mitigation techniques wouldn't be adequate to limit them—**there should be no serious show stoppers due to spacecraft charging at Jupiter as long as care is taken in preparing spacecraft for this harsh, challenging environment!**



Useful References

- Ajello, J. M., D. E. Shemansky, W. R. Pryor, A. I. Stewart, K. E. Simmons, T. Majeed, J. H. Waite, G. R. Gladstone, and D. Grodent, "Spectroscopic Evidence for High-Altitude Aurora at Jupiter from Galileo Extreme Ultraviolet Spectrometer and Hopkins Ultraviolet Telescope Observations", *Icarus*, 152, pp. 151-171, 2001.
- Bhattacharya, B., R. M. Thorne, and D. J. Williams, "On the energy source for the diffuse Jovian auroral emissivity", *Geophys. Res. Ltrrs.*, 28, 2715-2754, 2001.
- Connerney, J.E., M.H. Acuna, N.F. Ness, and T. Satoh, New models of Jupiter's magnetic field constrained by the Io flux tube footprint, *J. Geophys. Res.*, 103 (A6), 11929-11940, 1998.
- Divine, N. T., and H. B. Garrett, "Charged Particle Distributions in Jupiter's Magnetosphere", *J. Geophys. Res.*, 88, 6889-6903, 1983.
- Divine, N., "Flux, Fluence, and Dose for Jupiter Flyby Trajectories," JPL IOM 5217-91-47, The Jet Propulsion Laboratory, February 25, 1991.
- Evans, R. W., and H. B. Garrett, "Modeling Jupiter's Internal Electrostatic Discharge Environment", *J. Spacecraft*, Vol. 39, No. 6, Nov-Dec, 926-932, 2002.
- Gabriel, S. B., R. M. Jones, and H. B. Garrett, "Alfven Propulsion at Jupiter", in *Second International Conference on Tethers in Space*, Venice, Italy, October 7, 1987.
- Garrett, H. B., I. Jun, J. M. Ratliff, R. W. Evans, G. A. Clough, and R.W. McEntire, "Galileo Interim Radiation Electron Model", JPL Publication 03-006, 72 pages, The Jet Propulsion Laboratory, California Institute of Technology, Pasadena, CA, 2003. <http://www.openchannelfoundation.org/projects/GIRE/>
- Garrett, H. B.; Evans, R. W.; Whittlesey, A. C.; Katz, I.; Jun, I.; "Modeling of the Jovian Auroral Environment and Its Effects on Spacecraft Charging", *IEEE Transactions on Plasma Science*, Volume 36, Issue 5, Part 2, Oct. 2008, Page(s):2440 - 2449 TPS.2008.2004260
- Leung, P., A.C. Whittlesey, H.B. Garrett, P.A. Robinson Jr., and T.N. Divine, "Environment-Induced Electrostatic Discharges as the Cause of Voyager 1 Power-On Resets," *J. Spacecraft*, Vol. 23, No. 3, May/June, pp. 323-330, 1986.
- Sanmartin, J. R.; Charro, M.; Lorenzini, E. C.; Garrett, H. B.; Bombardelli, C.; Bramanti, C.; "Electrodynamic Tether at Jupiter—I: Capture Operation and Constraints", *IEEE Transactions on Plasma Science*, Volume 36, Issue 5, Part 2, Oct. 2008, Page(s):2450 - 2458 TPS.2008.2002580
- Whittlesey, A.C., "Avoiding Problems Caused by Spacecraft On-Orbit Internal Charging Effects," NASA-HDBK-4002, NASA, 1999.